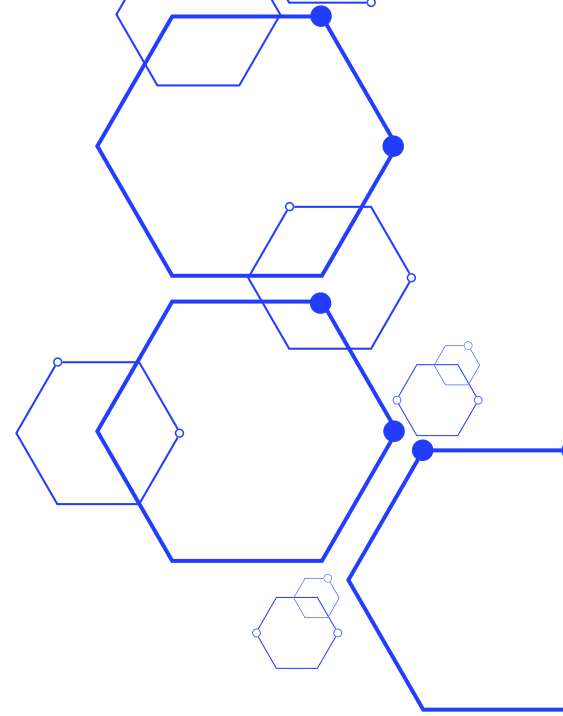


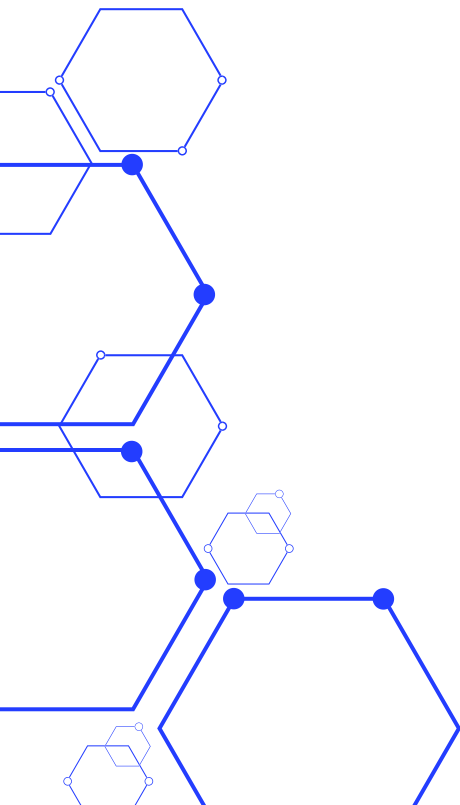


Global solutions for a growing world



# TECHMI BIO 1000

1000L INDUSTRIAL FERMENTERS AND BIOREACTORS



# TECHMI BIO 1000

## 1000L INDUSTRIAL FERMENTERS AND BIOREACTORS

BIOTECHNOLOGICAL PROCESSES, BIOPRODUCTS PRODUCTION PLANTS.

Our company offers complete upstream and downstream biopharmaceutical process equipment and complete solutions. We can meet customers' different process requirements for cell culture or microbial fermentation, including culture medium preparation, seed expansion, harvesting and clarification, buffer preparation, storage system, ultrafiltration system, etc. Helping our users to achieve high standard and high efficiency technological processes.



### TECHMI BIO 1000 INDUSTRIAL

- 1000L fermentation tanks: the main material is all 316L stainless steel tank, no dead angle in the tank.
- Working volume 800L-900L.
- It is equipped with special sampling and discharge valves for fermentation tanks and transfer pipelines.
- It has liquid level observation system through glass with wide viewing angle.
- 12V safety light.
- Temperature, PH, DO, defoamer, liquid level interface, inoculation port, feed port and multiple spare ports.
- Tank body: 0.3Mpa design pressure Jacket: 0.3Mpa design pressure, adopt optimized bypass design optimized design, improving the exchange efficiency and temperature uniformity in the tank.
- Tank function: high efficiency mechanical seal, inlet sterilization filter, exhaust condenser, inlet system with air distributor, flame inoculation system, etc.
- Inlet system with air distributor, flame inoculation port (also feed port and cleaning port), discharge port, discharge port sampling, feed port and cleaning port sampling.
- Discharge port, discharge port sampling, feed port.
- The five electrodes for automatic control parameters are: pH electrode, DO electrode, defoamer, electrode, temperature electrode port.
- Four peristaltic pumps are automatically controlled to replenish acid/alkali/foam foam/agent culture agent.
- Automatic tank lid lifting system (optional): Automatic electric tank lid lifting system designed for easy cleaning and maintenance of tank equipment.
- Siemens S7-200 series PLC control system.
- 10" LCD touch screen.

# TECHMI BIO 1000

## 1000L INDUSTRIAL FERMENTERS AND BIOREACTORS

### ECHMI BIO 1000 x 2

Having two 1000-liter bioreactors instead of one 2000-liter bioreactor offers significant advantages, especially in terms of flexibility and process optimization in a bioproduct company:

**Simultaneity in Product or Strain Development:** With two bioreactors, it is possible to develop two different products or strains at the same time. This is especially valuable in a research and development environment where speed and efficiency are crucial. It allows for greater project diversification and acceleration of the new product development cycle.

**Production Flexibility:** By having two bioreactors, production can be adjusted according to demand. If a product is in greater demand, one bioreactor can be fully dedicated to its production while the other is used for experimentation or smaller scale production.

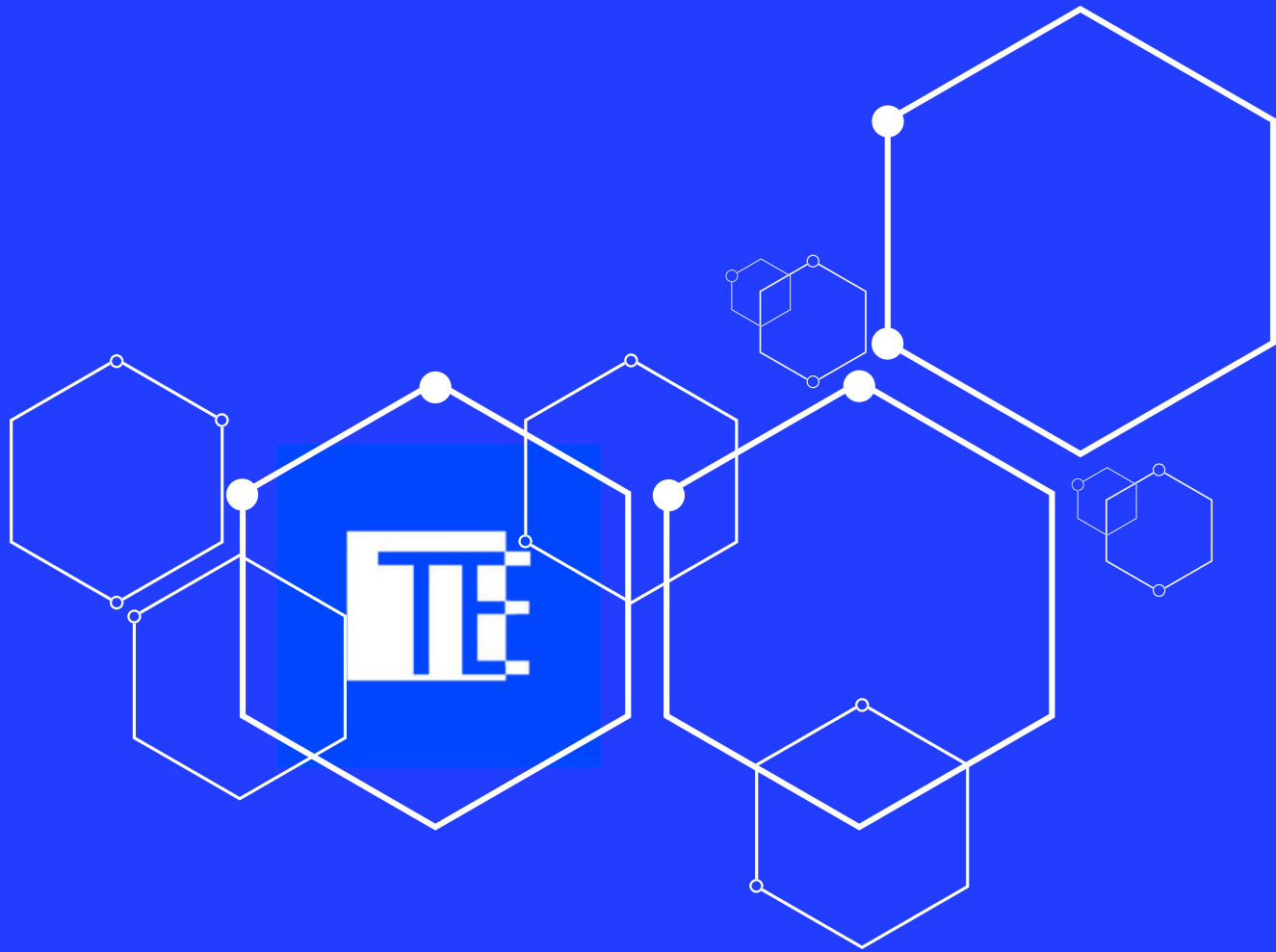
**Risk Management and Contamination Containment:** In the event of contamination or failure of one of the bioreactors, only half of the production capacity will be affected. This minimizes losses and ensures continuity in production or research.

**Optimization of Conditions for Different Cultures:** Each bioreactor can be configured and controlled for specific conditions, which is essential when working with different types of microorganisms that require different conditions for optimal growth.

**Parallel and Comparative Testing:** Having two bioreactors allows for comparative testing under the same conditions. This is useful for control studies and for comparing variations in culture conditions or product formulations.

**Scalability and Adaptability:** With two 1000 liter bioreactors, you have the option to scale up production of a single product if necessary, using both bioreactors for the same purpose. This offers valuable adaptability in response to changing market or production needs.

**Maintenance and Operating Costs:** In some cases, maintenance and operation of two smaller capacity bioreactors can be more economical and manageable than one larger capacity bioreactor, especially in terms of cleaning, sterilization and setup for different processes.



## **EUROPA**

Commercial Office

Carrer del Mas del Jutge, 57, CP 46900,

Torrente, Valencia, España

[info@techmigroup.com](mailto:info@techmigroup.com)

[clientes@techmigroup.com](mailto:clientes@techmigroup.com)

[techmigroup.com](http://techmigroup.com)