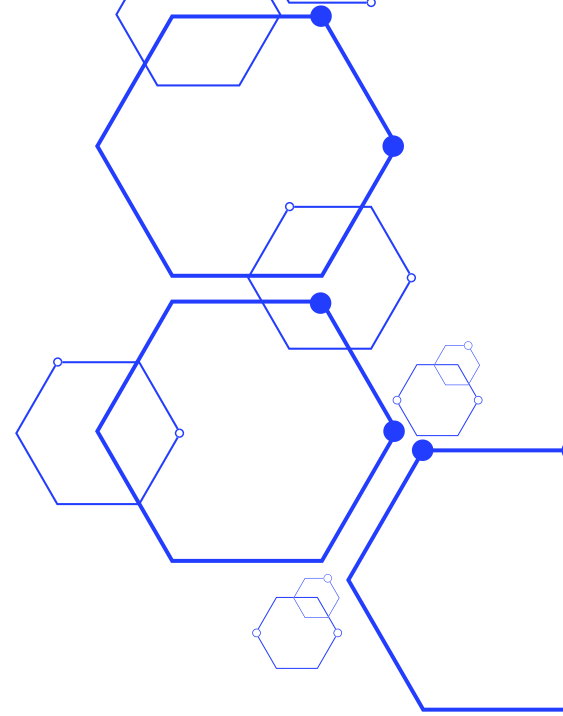


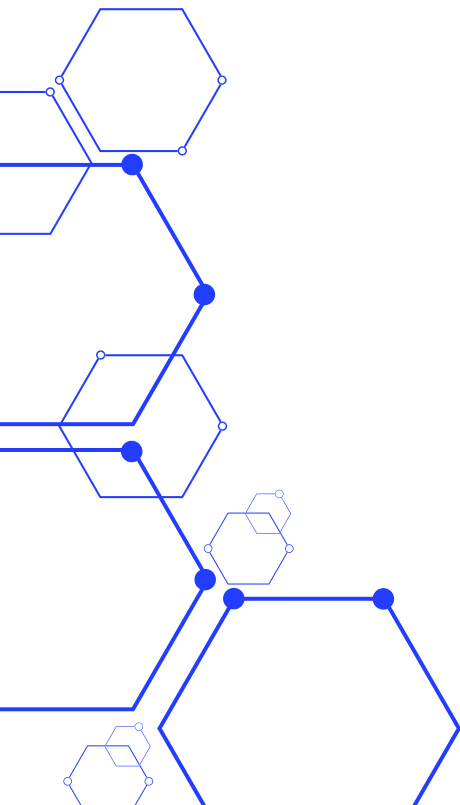


Soluciones globales para un mundo en crecimiento



# TECHMI BIO 500

INDUSTRIAL FERMENTERS AND BIOREACTORS



# TECHMI BIO 500

## INDUSTRIAL FERMENTERS AND BIOREACTORS

BIOTECHNOLOGICAL PROCESSES, BIOPRODUCTS PRODUCTION PLANTS.

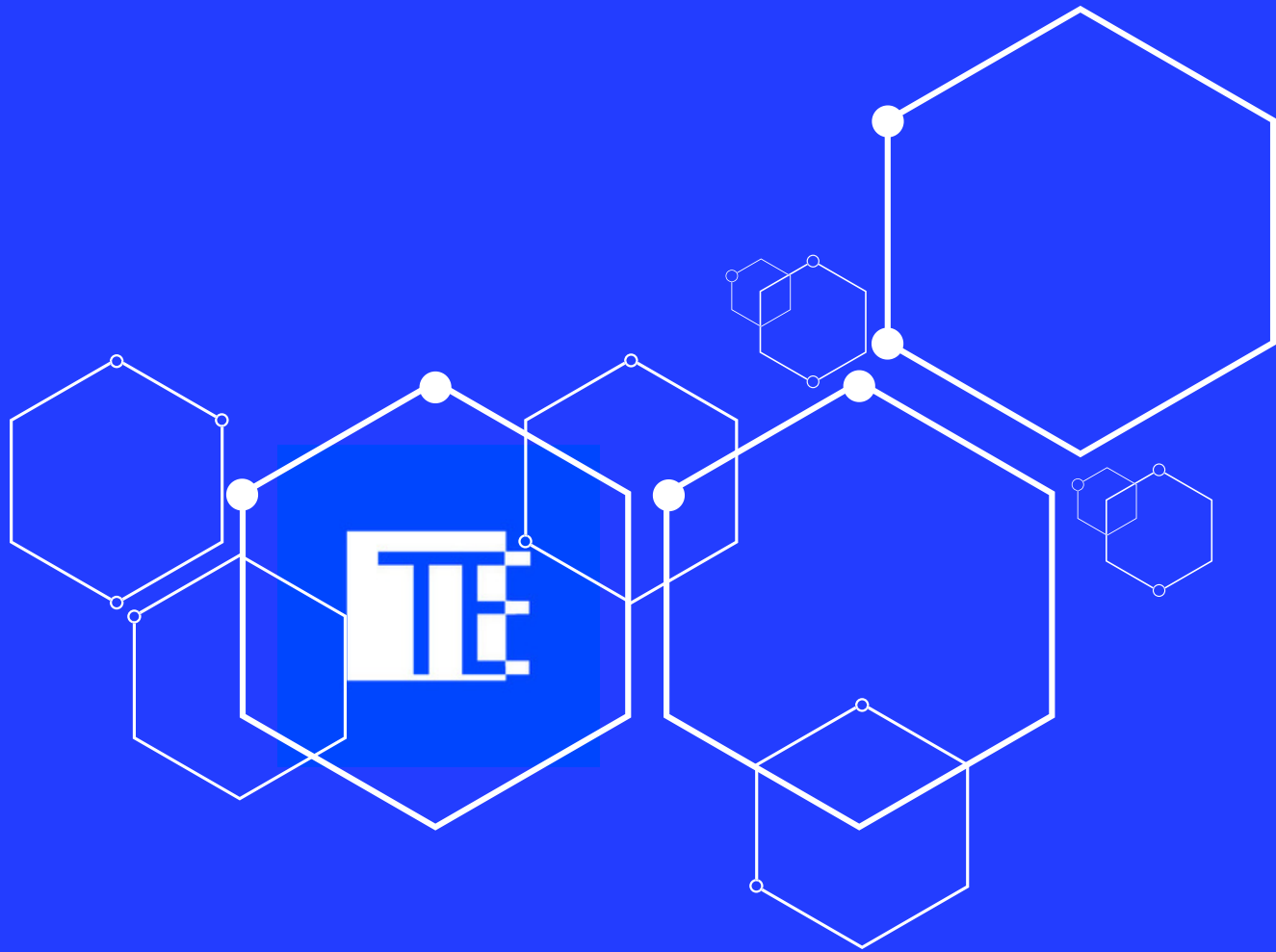
Our company offers complete upstream and downstream biopharmaceutical process equipment and complete solutions. We can meet customers' different process requirements for cell culture or microbial fermentation, including culture medium preparation, seed expansion, harvesting and clarification, buffer preparation, storage system, ultrafiltration system, etc. Helping our users to achieve high standard and high efficiency technological processes.



### TECHMI BIO 500

TECHMI BIO 500

- 500L tank: the main material is all 316L stainless steel tank, no dead angle in the tank.
- Working volume 200L-400L.
- It is equipped with special sampling and discharge valves for fermentation tanks and transfer pipelines.
- It has liquid level observation system through glass with wide viewing angle.
- 12V safety light.
- Temperature, PH, DO, defoamer, liquid level interface, inoculation port, feed port and multiple spare ports.
- Discharge port, discharge port sampling, power port.
- The five electrodes for automatic control parameters.
- Automatic peristaltic pumps for replenishing acid/alkali/foam foam/culture agent.
- Automatic tank lid lifting system
- Siemens S7-200 series PLC control system.
- 10" LCD touch screen.



## **EUROPA**

Commercial office

Carrer del Mas del Jutge, 57, CP 46900,

Torrente, Valencia, España

[info@techmigroup.com](mailto:info@techmigroup.com)

[clientes@techmigroup.com](mailto:clientes@techmigroup.com)

[techmigroup.com](http://techmigroup.com)