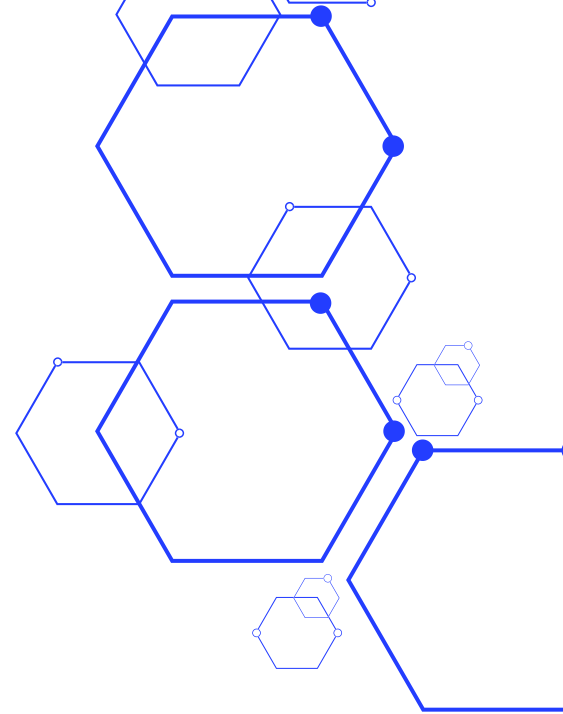


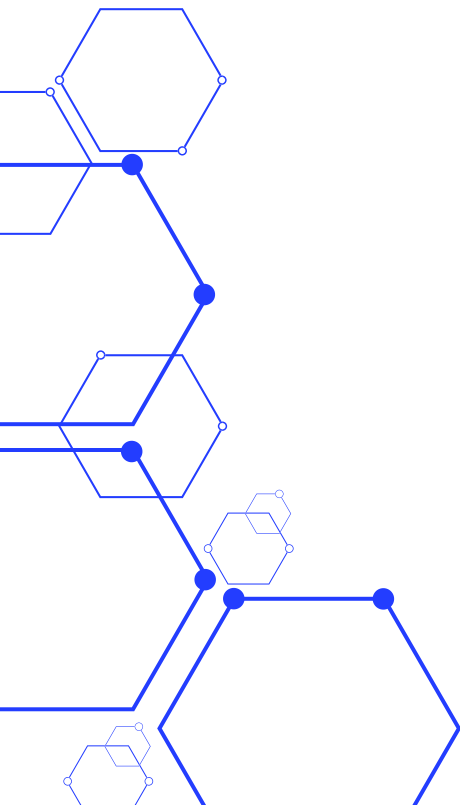


Soluciones globales para un mundo en crecimiento



TECHMI BIO INDUSTRIAL 30.000L

BIORREACTOR Y FERMENTADOR INDUSTRIAL DE HASTA 30.000L



TECHMI BIO INDUSTRIAL 30.000L

INDUSTRIAL BIOREACTOR AND FERMENTER UP TO 30,000L

At TECHMI Group, we specialize in the manufacture of high capacity bioreactors and fermenters, with volumes reaching up to 30,000 liters. Our commitment is to offer tailor-made solutions that not only meet, but exceed the expectations of our customers in various industries, from biotechnology to pharmaceutical and food production.



TECHMI BIO INDUSTRIAL 30.000L

At TECHMI Group, we specialize in the manufacture of high capacity bioreactors and fermenters, with volumes reaching up to 30,000 liters. Our commitment is to offer tailor-made solutions that not only meet, but exceed the expectations of our customers in various industries, from biotechnology to pharmaceutical and food production.

High Volume Manufacturing Capabilities:

Bioreactors and Fermentors Up to 30,000 Liters: With the ability to design and manufacture fermentation and cell culture equipment up to 30,000 liters, TECHMI Group is a leader in providing scalable solutions that fit the largest industrial production challenges.

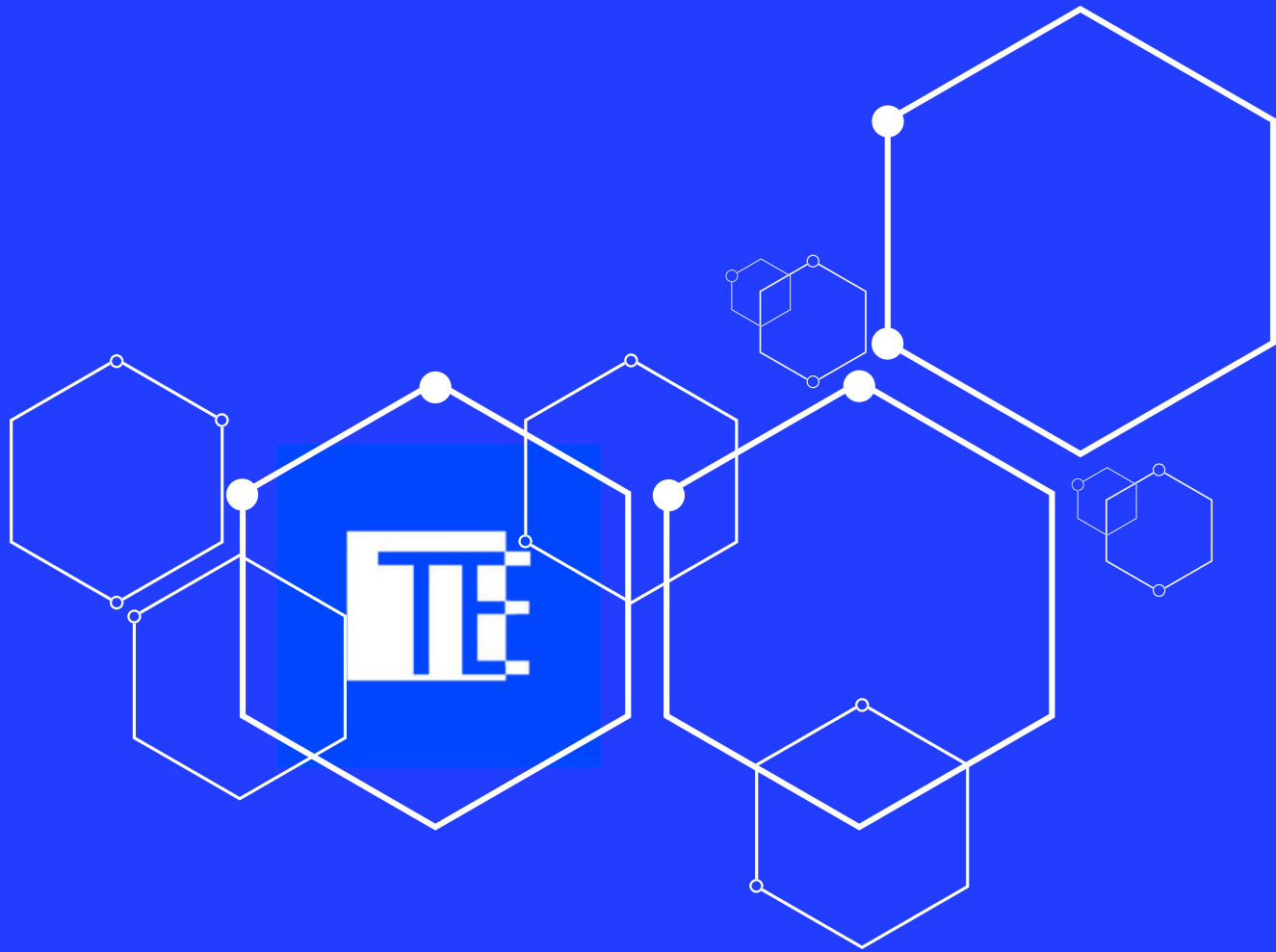
Precision Engineering and Quality: Every bioreactor and fermentor we manufacture is designed with a focus on precision and durability. We use premium materials and advanced technology to ensure optimal performance and extended service life, even under the most demanding conditions.

Adaptability to Global Regulations: Our bioreactors and fermenters are designed to meet the most stringent international regulations, including GMP, FDA, and CE. In addition, we work closely with our customers to ensure that our equipment meets any regulatory requirements specific to their industry or region.

Customization to Customer Requirements:

- **Custom Design:** At TECHMI Group, we understand that each project is unique. Therefore, we offer extensive customization options for our bioreactors and fermentors. This includes specific configurations of control parameters, materials, automation systems, and any other technical needs our customers may require.
- **Exacting Specification Compliance:** We are committed to rigorously meeting the specifications provided by our customers. Whether in terms of capacity, functionality, or compatibility with specific processes, we ensure that each piece of equipment is perfectly aligned with the customer's production and quality objectives.
- **Full Technical Support and Documentation:** In addition to technical customization, we provide full documentation and comprehensive technical support that facilitates regulatory compliance and ensures a smooth validation process.
- **Implementation Flexibility:** We understand that production needs can change over time. That is why our bioreactors and fermenters are designed with the flexibility to adapt to future modifications or expansions, offering a long-term sustainable solution.
- **TECHMI Group: Your Partner in High Volume Production**

With TECHMI Group, you not only get high-capacity bioreactors and fermentors, but also a partner committed to helping you achieve your production and regulatory compliance goals. We are here to transform your challenges into effective solutions tailored to your needs.



EUROPA

Commercial office

Carrer del Mas del Jutge, 57, CP 46900,

Torrente, Valencia, España

info@techmigroup.com

clientes@techmigroup.com

techmigroup.com