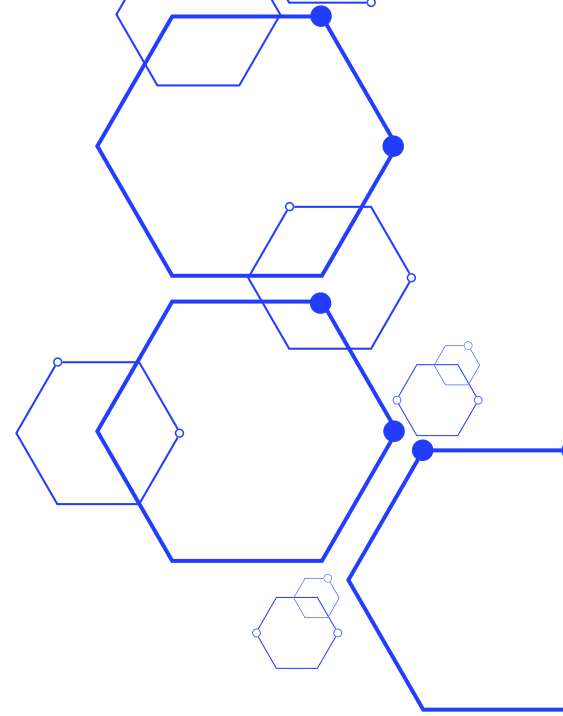


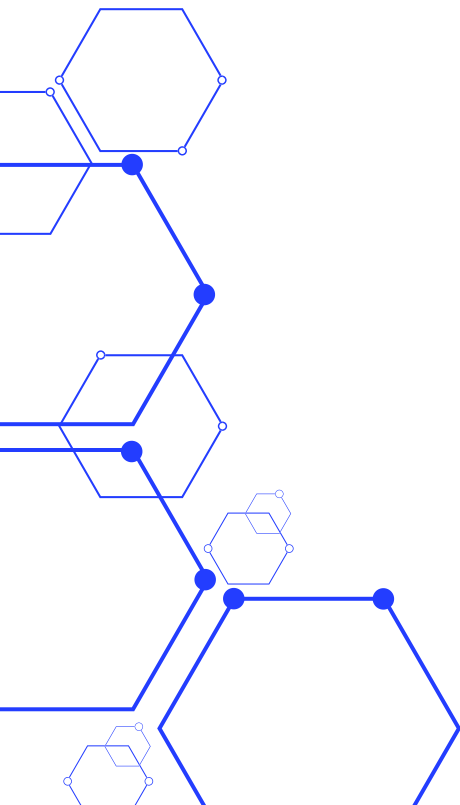


soluciones globales para un mundo en crecimiento



TECHMI BIO PHARMA

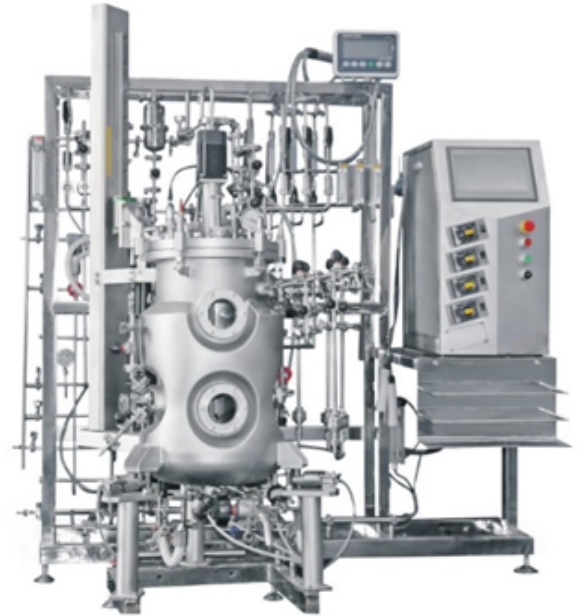
AUTOMATIC FERMENTATION TANK FROM 20 TO 50L.



TECHMI BIO PHARMA

AUTOMATIC FERMENTATION TANK FROM 20 TO 50L.

316 L Stainless Steel Vessel Fermenter for Vaccines, GMP TECHMI BIO PHARMA Human/Animal for Vaccines complies with GMP guidelines. It helps people around the world manage vaccine production according to rigorous quality standards, but at low cost. Flexible customized service allows for easy modularization of equipment capacity.



Automatic fermentation tank from 20 to 50L. Stainless steel 316L UNDER GMP STANDARD..

- Servomotor for fermenter agitation.
- Direct mechanical stirring with top drive or indirect mechanical stirring with magnetic drive with bottom drive.
- Liquid level alarm function and automatic replenishment.
- Foam level alarm function and automatic defoamer addition.
- Alarm events can be recorded and checked.
- Speed, temperature, Ph value, DO value, etc. can be set in automatic and manual.
- Tank parameters can be controlled by curve setting.
- Each parameter has PID tuning process display.

At TECHMI Group, we understand that the success of any fermentation project begins in the laboratory. That's why our laboratory fermentors are designed to provide the precision, control and flexibility researchers need to conduct rigorous experiments and obtain reliable results. Our fermenters allow meticulous control of key variables such as temperature, pH, dissolved oxygen and agitation, ensuring ideal conditions for advanced research.

Designed to be versatile, our fermenters can be adapted to a wide range of microorganisms and processes, allowing you to explore different fermentation conditions and optimize each step of the process.

Equipped with modern control systems and a user-friendly interface, our fermentors facilitate real-time monitoring and parameter adjustment, allowing researchers to focus on the science. Compact and Efficient Design Taking up minimal space in the lab, our fermenters offer maximum functionality without compromising performance, making them ideal for environments where space is limited.

TECHMI Group's laboratory fermentors are designed with scalability in mind. Data obtained at the laboratory level can be easily transferred to a pilot plant, ensuring a smooth and effective transition.

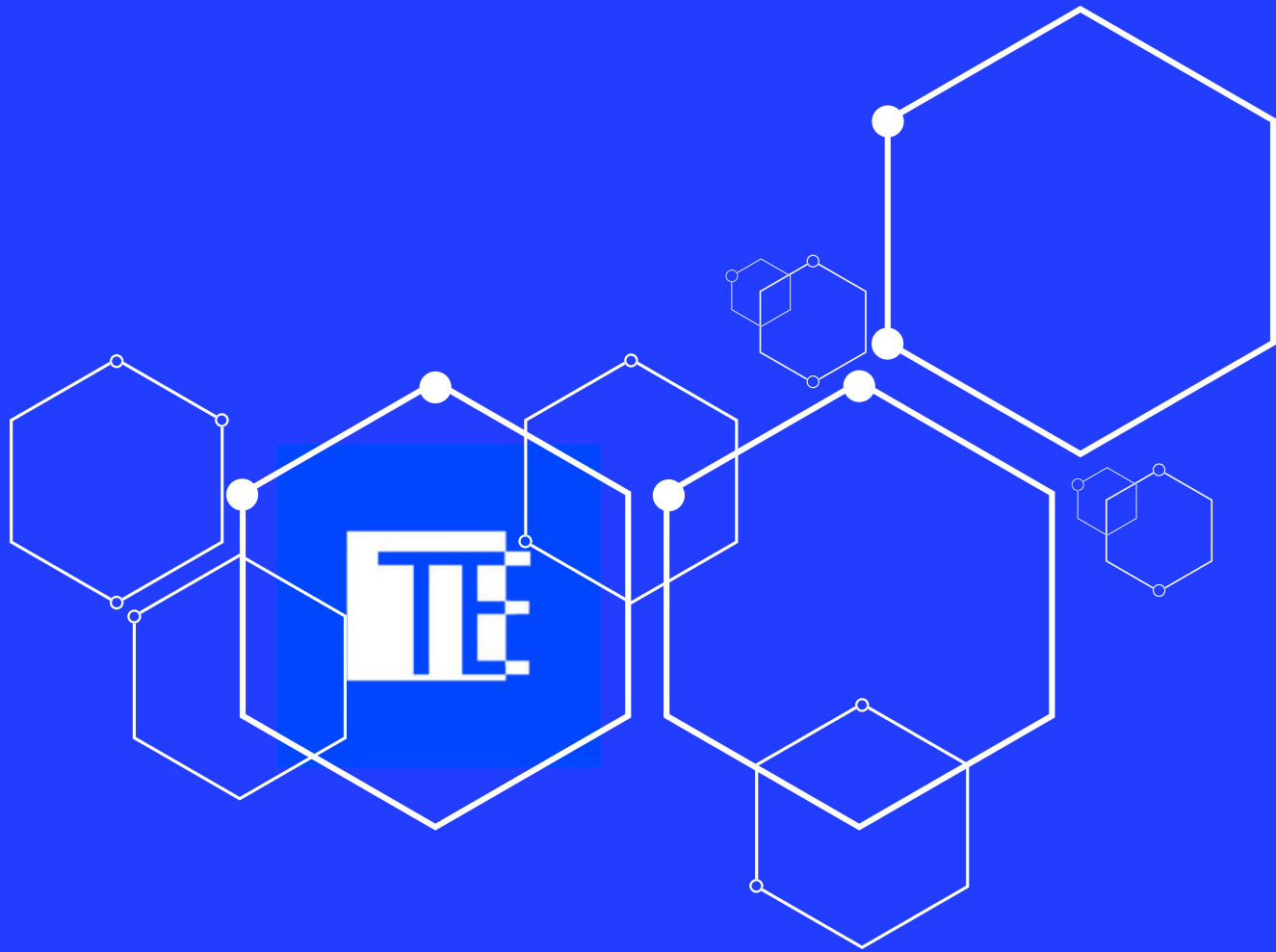
Repeatability and Consistency: Thanks to their robust design and precise controls, our fermenters ensure that results obtained in the laboratory are reproducible on a larger scale, facilitating the development of scalable processes.

TECHMI Group offers comprehensive technical support, accompanying our customers at every stage of the scale-up process, from optimization in the laboratory to implementation in the pilot plant or final formulation.

By using fermenters that guarantee a smooth scale-up, projects can move more quickly from the research phase to production, accelerating time to market.

Our equipment not only facilitates immediate scale-up, but is designed to be adaptable to future formulation and production needs, offering a long-term investment in fermentation technology.





EUROPA

Commercial office

Carrer del Mas del Jutge, 57, CP 46900,

Torrente, Valencia, España

info@techmigroup.com

clientes@techmigroup.com

techmigroup.com