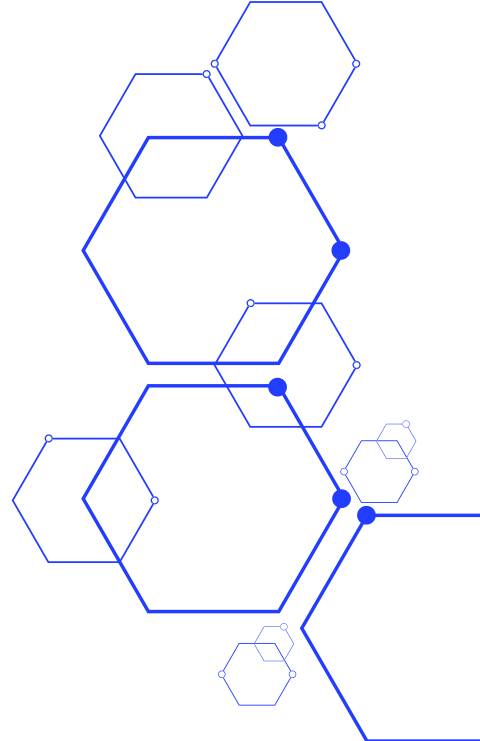


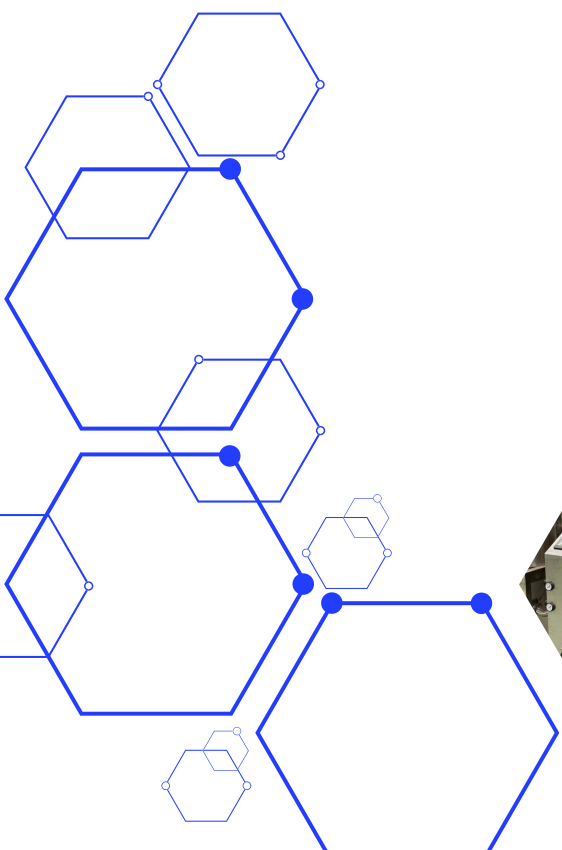


Global solutions for a growing world



# SPRAY DRYER FROM 5L/H

SPRAY DRYER/ SPRAY DRYING EQUIPMENT FROM 5L/H



## SPRAY DRYER FROM 5L/H

### SPRAY DRYER/ SPRAY DRYING EQUIPMENT FROM 5L/H

**MODELO:** SPRAY DRYER FROM 5L/H

The 5L Spray Dryer is an advanced spray drying solution designed to meet the needs of industrial and laboratory processes. This equipment enables the efficient conversion of liquids into fine powders through a rapid and controlled process. Ideal for applications requiring precision, uniformity, and high evaporation capacity.

**MATERIAL:** Stainless Steel

#### APPLICATIONS:

Pharmaceutical Industry: Production of antibiotics, vaccines, and powdered supplements.

Food: Creation of dairy powders, flavorings, colorings and food additives.

Chemistry and Biotechnology: Development of enzymes, microorganisms and precision chemical materials.

Cosmetics Sector: Drying of active ingredients for innovative products.

#### DETAILS:

- 304 Stainless Steel
- Touch Screen Control
- Temperature Protection
- P.I.D Intelligent Control

#### FEATURES:

- Maximum evaporation capacity: Up to 6L/h, ideal for liquid solutions, including some with suspensions.
- Inlet temperature range: From ambient temperature to 330°C.
- Outlet temperature range: From room temperature to 140°C.
- Heating Method: Electric heating, ensuring efficient and consistent operation.
- Drying method: Centrifugal atomization, ensuring uniform and rapid drying.
- Equipment material: 304 stainless steel, corrosion resistant and suitable for applications in demanding industries.
- Installation requirements: Designed for indoor use, with a working voltage of 380V and frequency of 50-60 Hz.
- Dimensions: Compact and functional, measuring 2.0 m x 1.3 m x 2.15 m, optimizing space in the laboratory or industrial plant.



|   |   |
|---|---|
| Material  | Solution (include some suspension liquids |
| Max. water evaporation capacity of host machine | About 6L/h                                |
| Inlet air temperature                           | From room temperature to 330°C            |
| Outlet air temperature                          | From room temperature to 140°C            |
| Heating method                                  | Electrical heating                        |
| Drying method                                   | Centrifugal atomization                   |
| Equipment material                              | 304 stainless steel                       |
| Installation site                               | Indoor                                    |
| Working voltage                                 | 380V 50-60HZ                              |
| Floor area (length, width and height)           | 2.0m*1.3m*2.15m                           |

COMPLIANCE WITH GLOBAL REGULATIONS:

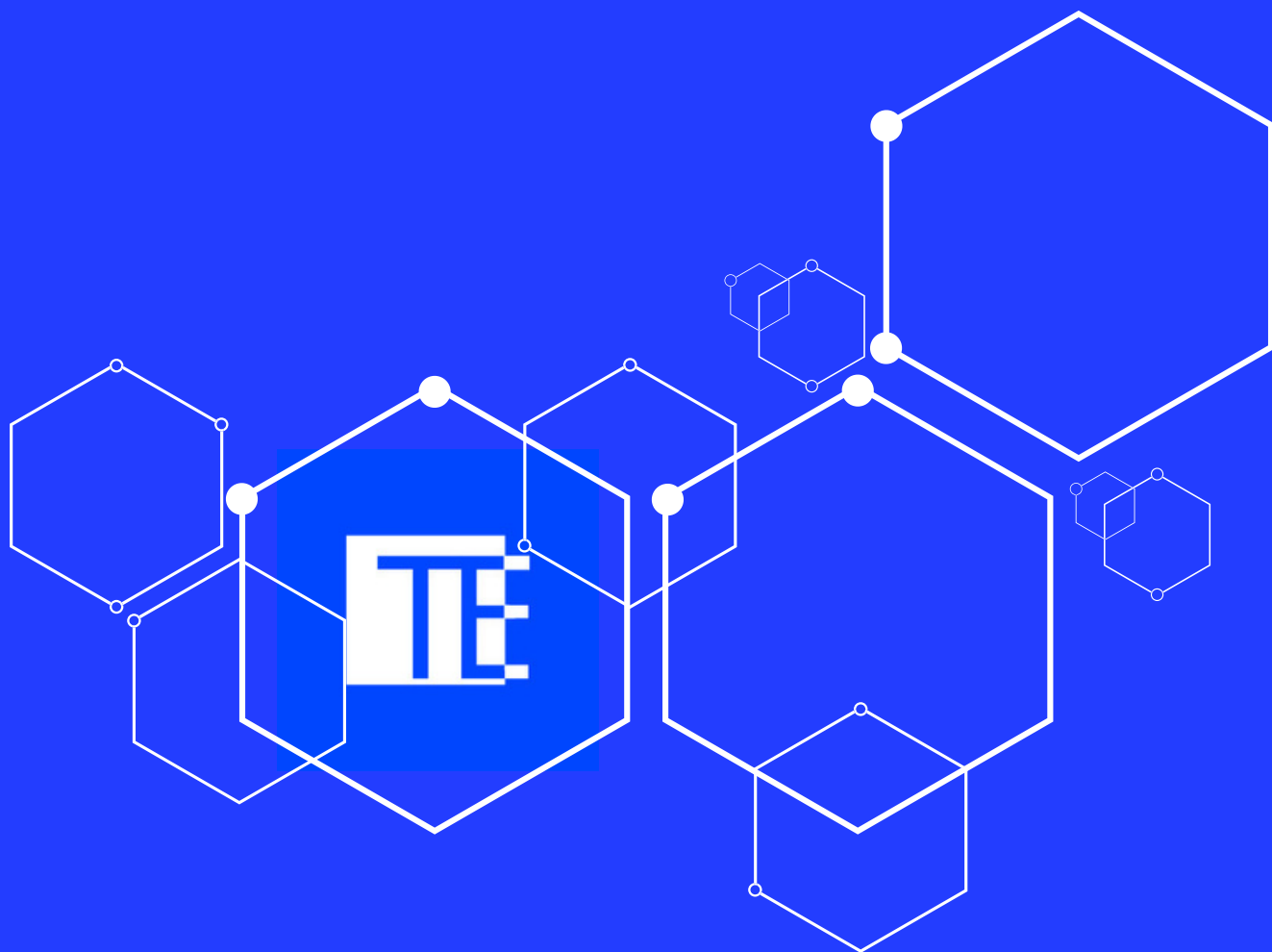
At **TECHMI Group**, we understand the importance of regulatory compliance in the biotechnology industry. Our spray dryer equipment is designed to comply with a wide range of international regulations, including GMP (Good Manufacturing Practices), FDA, and CE guidelines, ensuring that your processes are safe and ready for regulatory approval.

Made with high-quality materials, our fermenters not only meet the strictest hygiene and safety standards, but also offer durability and strength, ensuring long-term, reliable operation.

We offer comprehensive and detailed documentation that accompanies each fermenter, facilitating audits and compliance with industry-specific regulations. This includes operating manuals, material certificates, and validation testing, all designed to simplify the regulatory process.

In addition to meeting standard regulations, our fermenters can be customized to meet the specific regulatory requirements of your industry or region, ensuring your equipment is fully aligned with local regulatory requirements.

Reliable Innovation and Guaranteed Compliance With TECHMI Group spray dryers, you not only get advanced and efficient equipment, but also the peace of mind of knowing your process is backed by technology that meets the strictest regulations.



## **EUROPA**

Commercial office

Carrer del Mas del Jutge, 57, CP  
46900, Torrente, Valencia, España

[info@techmigroup.com](mailto:info@techmigroup.com)

[clientes@techmigroup.com](mailto:clientes@techmigroup.com)

[techmigroup.com](http://techmigroup.com)